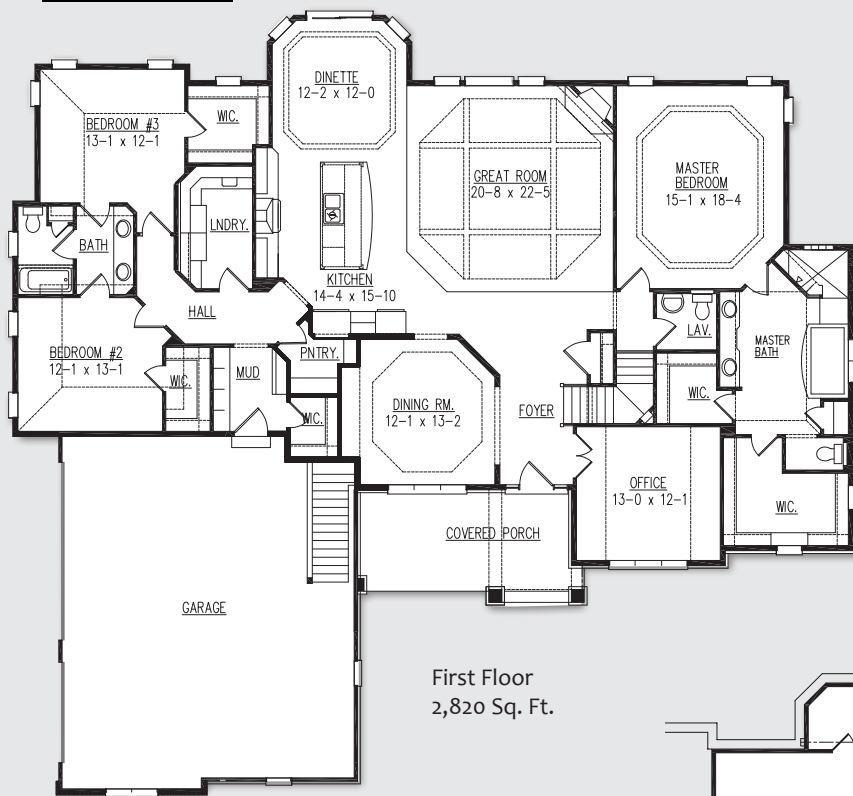




# THE DOVER II MODEL

Shown with manufactured stone option in lieu of brick.

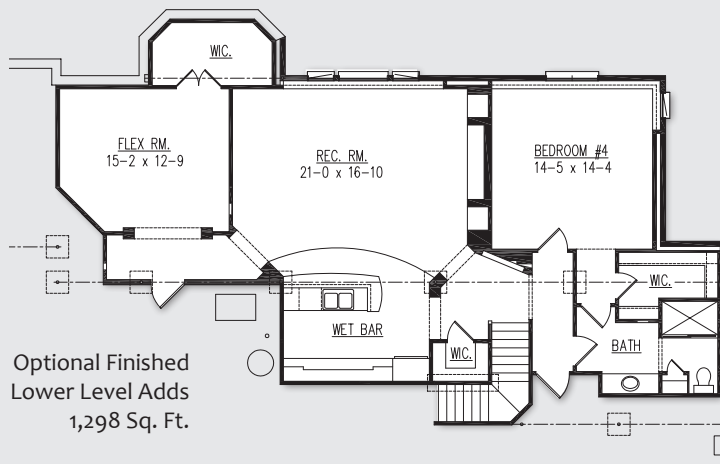
N33 W29520 Millridge Road  
Woodridge Estates, Town of Delafield



First Floor  
2,820 Sq. Ft.

### PLAN DETAILS

- 2,820 Sq. Ft., plus 1,298 Sq. Ft. optional finished lower level
- 4 bedrooms
- 3.5 bathrooms
- 3 car garage
- Beautiful kitchen with island snack bar
- Formal dining room
- Spacious office
- Finished lower level with exercise/play room, rec room, wet bar, 4th bedroom, and full bath



Optional Finished  
Lower Level Adds  
1,298 Sq. Ft.